

**Dear Living Saviour,**

**Sunday, October 6, 2024 Holy Communion 10:30 A.M.**

In person or on-line [https://www.youtube.com/channel/UCuMJ5vxpQpMZLB8638JxE\\_w](https://www.youtube.com/channel/UCuMJ5vxpQpMZLB8638JxE_w)  
or through our website: [www.livingsaviourlc.org](http://www.livingsaviourlc.org).



*(Tom Chriske)*

**Serving as worship leaders today:**

Assisting Minister — **Addison Noonkester**

Crucifer—**Jackson Thom**

Acolyte—**Henry Schwab**

Thanks to all who serve God and our community of faith.

---

**REMINDER FOR PRAYER REQUESTS:** We will be 'zeroing' the white board and weekly prayer lists on the 2nd Monday of each month. If you would like to have someone added onto the prayer list moving forward, please make sure you do one of the following:

- Add the name(s) on the white board
- Email the church office
- Email Alice Jenkins

Thank you!

**The Altar Flowers** for this Sunday are given by Cathy Lyall, to the Glory of God and in memory of their departed loved ones.

**SUNDAY ALTAR FLOWERS: call or email Ruth at the church office 704-542-3626** to sign up: M-F, 9-2. Your \$50 donation may be dropped off on Sundays, mailed, or by using the on-line giving. Please just note "Altar Flowers" on the memo line.

OR

**Online:** The **2024** online donation chart may be found here:

<https://www.signupgenius.com/go/10C0C4CACAC29A6F4C16-46302964-2024>

**Open Sundays for Altar Flower Donations:**

“ December 29

---

## LUTHERAN DISASTER RELIEF

LSLC is inviting all congregation members and friends to donate supplies for disaster relief in the mountains. These are specific needs as designated by the list below from Lutheran Disaster Relief (LDR). A tag for each item will be on the Christmas tree located in the Sunday School coffee and fellowship area. Please take a tag and give what you can and invite neighbors and friends to give, too! Items will be placed on a table in the back of the fellowship hall. Every little bit helps! items are due by Oct. 20 as they will be packed on the 27th.

---

**NEWBERRY COLLEGE SINGERS AND MADRIGAL** will be in concert on Thursday, October 17 at Christ Lutheran Church, 4519 Providence Rd. The concert begins at 7:00 PM and there is no admission charge. Newberry College, located in Newberry, SC is a college of the ELCA.

---

**Counters needed!** If you are interested in assisting with counting contributions after service, please contact Laura Schwab (980-229-3900 or [laboutwright@gmail.com](mailto:laboutwright@gmail.com)). The task can usually be completed in less than 30 minutes.

---

**IT'S BEGINNING TO LOOK A LOT LIKE CHRISTMAS!** Don't believe it? Just walk into several of the local stores and look around! Here at Living Saviour it may not look like Christmas, but it's already time to prepare.

**It's time to order poinsettias for our Christmas worship services.**

- **COST:** \$10.00–Red or White 6.5" plant
  - **HOW TO ORDER:** (1) Call or email Ruth in the church office with the number of plants you wish to order and dedication for the worship folder. OR (2) Complete an order form on the worship bulletin table and put it in the clear box outside the office door.
  - **PLEASE ORDER BY SUNDAY NOVEMBER 3!**
- 

## SMITHFIELD ELEMENTARY SUPPLY DREAM SHEET

Crayons  
Markers  
Highlighters  
Expo Markers  
Sharpie Markers  
Coloring Pencils  
Glue Sticks  
Scissors  
Flair Pens (Teachers love these!)  
Large Paper Clips

---

**2024 CRAFT FAIR!** Please save the date! December 7th, 9-2.  
If anyone is interested, they can email me at [kittygirlfriends@gmail.com](mailto:kittygirlfriends@gmail.com)

---

**2024 BREAKFAST WITH SANTA!** Please save the date! December 14th, 9-11. More information to follow.

---

### **HELP WITH LAWN CARE:**

We are needing some volunteers to help with taking care of our lawn. If you can help and be part of the "rotation," please contact Janet Axtman. Thank you!

---

### **SUNDAY COFFEE HOUR HOSTS AND FOOD DONATIONS.**

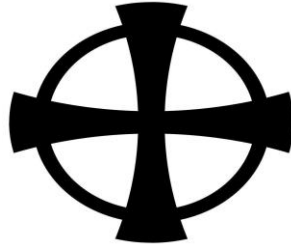
- If you'd like to **host coffee hour** please sign up on the Sunday(s) you'd serve. You'll find the sign up sheet on the coffee hour table in the gallery.
  - **Food for coffee hour is often in short supply.** Whether you host or not, consider bringing in food items to be served on that day or on future Sundays.
  - The coffee hour is an important part of our ministry of hospitality, something we can all share in.
  - **Note to our devoted coffee makers:** Thank you for your help in making the Sunday morning coffee! It is very much appreciated and enjoyed both before and after Worship. No one needs to purchase coffee for the near future. Through some generous donations, we have several cases of single packaged coffee (both regular and decaf), each of which makes one pot of coffee.
  - There are labeled plastic containers on the counter next to the coffee machine for keeping several packages. The cases of additional coffee are by the back door near the freezer in the pantry and are to replenish the containers on the kitchen counter. Thank you again for this service you provide us! We also have a good supply of other coffee supplies (creamers, sweeteners, etc.). These are in the cabinet above the coffee machine.
  - If you believe there are any supplies needed, please leave a note for Ruth on her desk with your name or contact Alice Jenkins. Thank you!
- 

**CHRISTMAS CONCERT.** Living Saviour Choirs, accompanied by orchestra and organ will present the Christmas Concert on **Sunday, December 8 at 3:00.** The popular event

attracts not only our members, but many folks from our community. There is no admission charge. A free-will offering is taken to support a charitable cause.

---

## FAITH FORMATION



**SUNDAY SCHOOL FOR CHILDREN, YOUTH ASSISTANTS AND ADULTS:**



### **SUNDAY SCHOOL IS BACK!!!!**

ADULTS - 9:15 am in the Education Wing

CHILDREN - 9:30 am Downstairs

Adults will begin discussing Jesus and the Disinherited (Howard Thurman). This Sunday, we will look at the two Forwards and Preface. Please join us!!

Children (ages 2 years through 5th grade) will have Bible stories and hands-on experiences that support the story. Parent(s) are welcome to join in the class.

---

### **Strive ~ AOB**

(Formerly "Confirmation")

Every 4th Sunday (11:45-2)...LUNCH PROVIDED!

---

### **GATHERING@theTABLE**

In October, Gathering@theTable will meet on Thursday, October 3<sup>rd</sup> at 6:15 p.m. All are welcome!

---

## **WEDNESDAY MORNING BIBLE STUDY**

We will read & discuss "How Happiness Happens" by Max Lucado. I think we can all use a little more happiness in this upside down world!

Please get the book. At Amazon it is \$10.86. It is available on Kindle also. It may be available at your favorite bookstore - not sure.

Please join us on Wednesdays at 10AM for discussion and conversation. All are welcome.

Any questions please email or call Janet Mayer.

---

## **DAILY DEVOTIONAL AIDS**

**DAILY DEVOTIONAL BOOKLETS, *THE WORD IN SEASON***, are available on the welcome table where worship folders are located. The October-December 2024 Word In Season devotional is now available. If you'd like one sent to you, please contact Ruth at the church office.

**DAILY DEVOTIONS, *TAKING FAITH HOME (TFH)*** are available on an attachment in the weekly email you receive from the church office.

---

## **MUSIC MINISTRY**

CHANCEL CHOIR: WEDNESDAY REHEARSALS AT 6:30 (PLEASE NOTE NEW TIME)

- Middle school age and up
- Lead Sunday worship throughout the year

ALLELUIA RINGERS: WEDNESDAY REHEARSALS AT 5:30. (PLEASE NOTE NEW TIME)

- Middle school age and up
- Ring in worship at announced times throughout the choir season (Sept-May)
- Some music reading ability helpful but we can teach you!

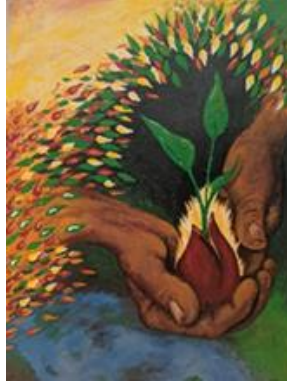
FESTIVAL CHOIR.

- Leads worship on festival Sundays and seasons such Reformation, Advent, Christmas and Christmas Concert, Lent, Easter.

WE WELCOME ANY NEWCOMERS TO EITHER GROUP. PLEASE SPEAK WITH DON HUFF WITH QUESTIONS ABOUT THESE OPPORTUNITIES TO SERVE.

---

## HEALTH AND WHOLENESS MINISTRY G.R.A.C.E. INFORMATION:



**Walkers unite - Please note the location change!!** By popular demand the Health and Wholeness Ministry is starting a walking group. The first walk will be Wednesday October 9 at 12 noon. Meet at **Little Sugar Creek Greenway at the James Polk Historic site: 12031 Lancaster Hwy, Pineville**. We will walk an hour on this paved trail. Bring water and comfortable walking shoes. Questions call: Laura Michael (980-214-7171). Hope to see you there!

### Active Exercise Opportunities:

- Yoga For You:
  - Mondays - 6:15 p.m.
  - Tuesdays - 9:30 a.m.
  - Thursdays - 9:30 a.m. and 6:15 p.m.
  - Saturdays - 11:00:00 a.m.
- Chair Yoga - Thursdays at 11:00 a.m.
- Strength and Stamina - Saturdays at 9:30 a.m. The Strength and Stamina class will not be meeting on October 5 and October 12. Class will resume on the following Saturday October 19.
- Wednesday, October 9th - Walking Group

### October 2024 Health and Wholeness Tip #1 H/W ministry team

The Health and Wholeness focus for October is Fire Safety.

In case of fire R.A.C.E.

- R. Remove everyone from the area
- A. Activate the fire alarm or call 911
- C. Confine. Close the door on the fire to limit spread.
- E. Extinguish or evacuate. A fire extinguisher may be used on a smaller fire but evacuate if the fire is not contained.

In all instances take up the shield of faith, with which you can extinguish all the flaming darts of the evil one. Ephesians 6:16

---

## LOST AND FOUND!

Did you leave something at the church, maybe? We have a 'lost and found' drawer underneath the name tags counter in the Fellowship Hall, as well as some items on the round table in the church office.

---

**OCTOBER NEWSLETTER COPIES** are available outside the sanctuary on the table beside the building exit door. The newsletter is mailed to members monthly, but a few hard copies are available for those who prefer them.

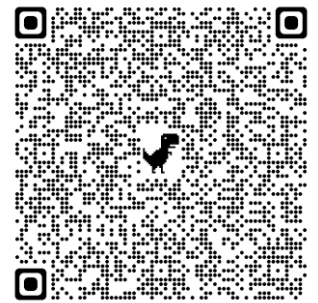
---

### Your Offerings:

You may use this QR code to make an on-line payment. It will take you to the church VANCO on-line payment portal.

You may also access on-line giving through the website, click the on-line giving button to pay for flowers, make an offering to the general operating fund, or support the on-going outreach opportunities. Indicate in the line what your gift is directed towards.

You may also mail your gift to the church. Clearly state on the memo line what the check is to be used for-- General Fund, Mortgage Reduction or other purpose (such as Flowers, Special Day, etc.).



Living Saviour Lutheran Church  
6817 Carmel Road  
Charlotte, N.C. 28226  
Website: [www.livingsaviourlc.org](http://www.livingsaviourlc.org)  
E-mail: [lslc@livingsaviourlc.org](mailto:lslc@livingsaviourlc.org)